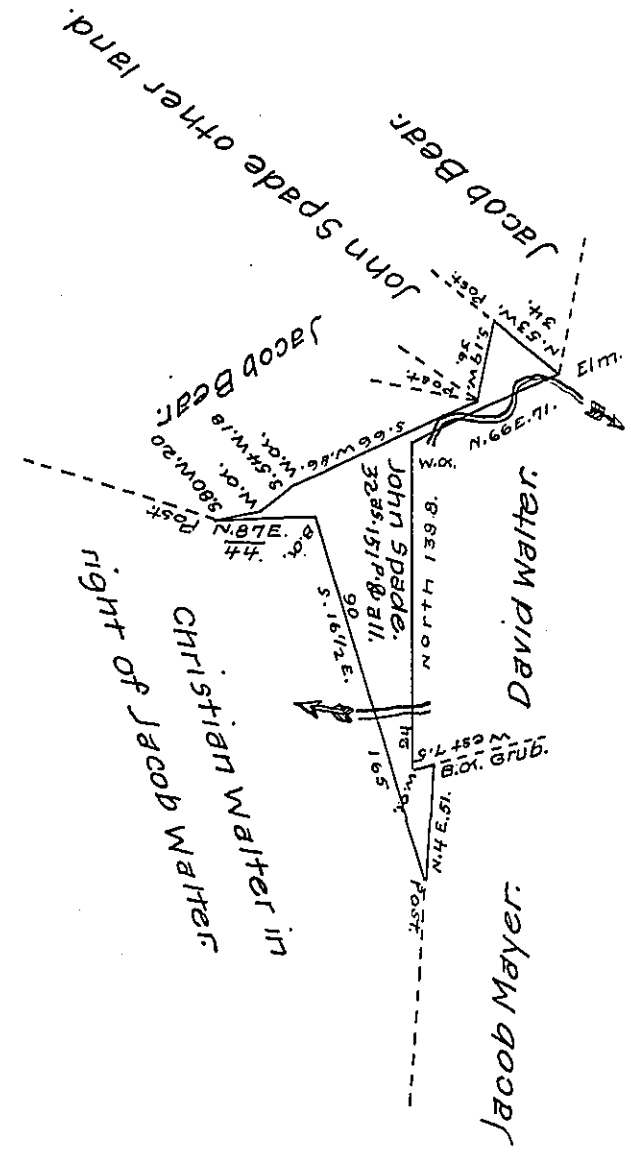


FORM NO 1.



A Draught of a tract of land called — Situate in Centre town-
 ship Union County containing Thirty two Acres and One hundred and
 fifty one perches and the usual Allowance of Six per Cent for roads
 &c. Surveyed the Second day of June A.D. One thousand eight
 hundred and fifteen for John Spade in pursuance of his War-
 rant bearing date the eleventh day of May A.D. One thousand
 eight hundred and fifteen.

Simon Snyder, Jun^r, D.S.

To Jacob Spangler, Esquire,
 Surveyor General of Pennsylv^a.

IN TESTIMONY that the above is a copy of the original remaining on file in
 the Department of Internal Affairs of Pennsylvania, made
 conformably to an Act of Assembly approved the 16th day of
 February, 1833, I have hereunto set my Hand and caused
 the Seal of said Department to be affixed at Harrisburg,
 this thirty first day of May, 1907.

Henry Hoover
 Secretary of Internal Affairs.